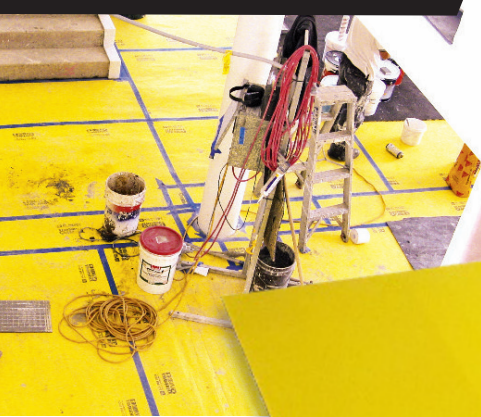


# What do you Need to Protect?

**Stops damage from tools**



**Waterproofing**



**Marble**



**Hi vis for underground columns**



**6  
mm**

## Premium Corflute

Protection Sheet  
**1800 x 1200mm**  
**1500GSM**  
**YELLOW**

- Heavy Duty Impact Protection
- Fluted Heavy Walled Construction
- Flexible & Easy to Cut around protrusions etc
- Waterproof
- High Vis – Make your walkways easy to follow
- Quick to install, all you need is Cloth tape

**Order Code:**  
**CORPREM6YW**



*"For all your fastener needs"*  
**TIMBERFIX**  
HARDWARE • SITE SUPPLIES • FASTENERS

**EXPRESS NEXT MORNING DELIVERY**

**1300 888 729**

[sales@timberfix.com.au](mailto:sales@timberfix.com.au)  
[www.timberfix.com.au](http://www.timberfix.com.au)

All advertised product pricing excludes GST & Delivery. Next morning delivery available for stocked items to Sydney metro area Mon-Fri when ordered by 5pm